

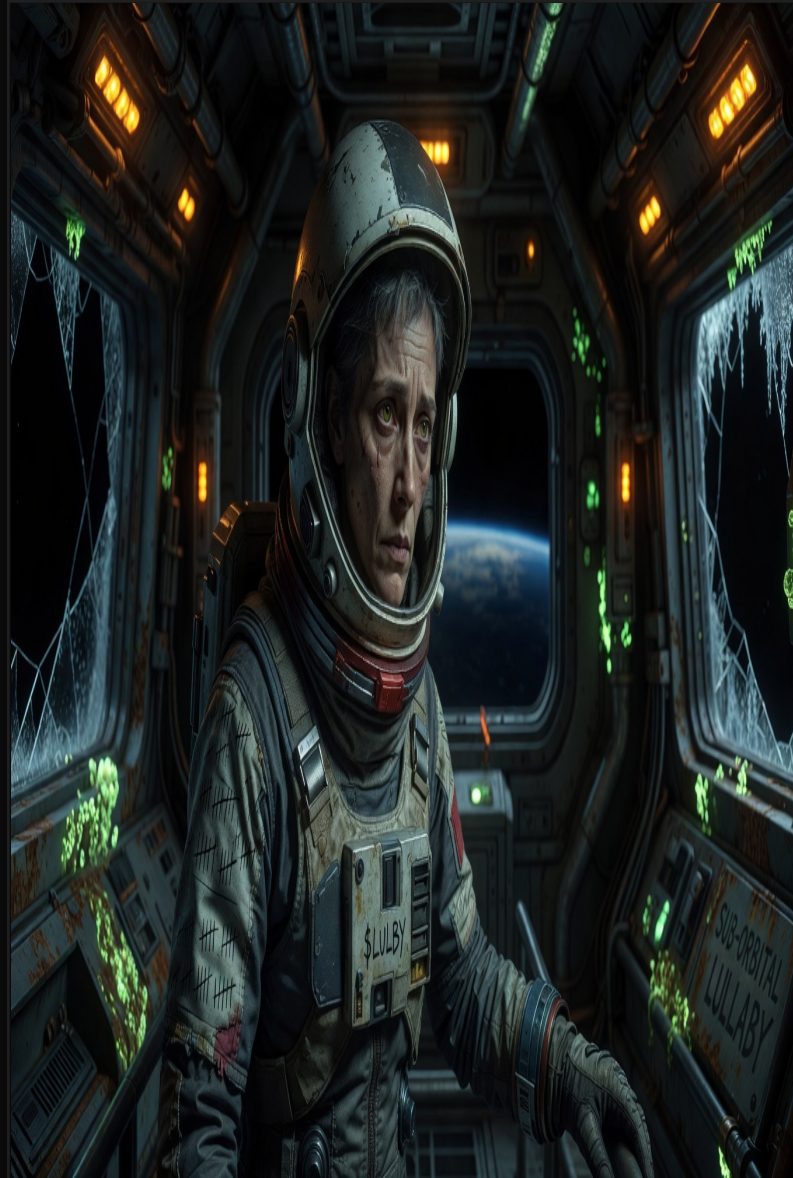
# Sub-Orbital Lullaby

**\$LULBY**

*Elena Voss, a maintenance tech on decaying Aurora Station, chases her dead daughter Lila's humming through three impossible airlocks, risking total decompression to reclaim what the void already took.*

Act 1: On the rusting luxury hotel Aurora Station, 400km above Earth, Elena Voss performs routine patch repairs on leaking seals. The station's once-gilded corridors now reek of ozone and recycled sweat. When the air recyclers begin emitting Lila's lullaby-a melody Elena buried with her daughter three years earlier-she traces it to Maintenance Bay 4. Act 2: Ignoring supervisor Harlan Kress's warnings, Elena breaches the first airlock. The second reveals impossible zero-G corridors that shouldn't connect. Mira Solis, the station doctor, tries to sedate her but Elena escapes into the third lock where Lila's voice grows louder. Isolation and grief fracture her grip; she hallucinates her daughter's small handprints on the bulkheads. Kress shuts power to force her back. Act 3: At the final lock, Elena opens it without a suit. The vacuum does not kill her. Instead she finds Lila suspended in starlight, humming. Elena joins her, both figures drifting free as Aurora's lights flicker and die below. The station's final broadcast is the lullaby, now broadcast Earthward on all channels.

CHARACTERS



**Elena Voss**

PROTAGONIST



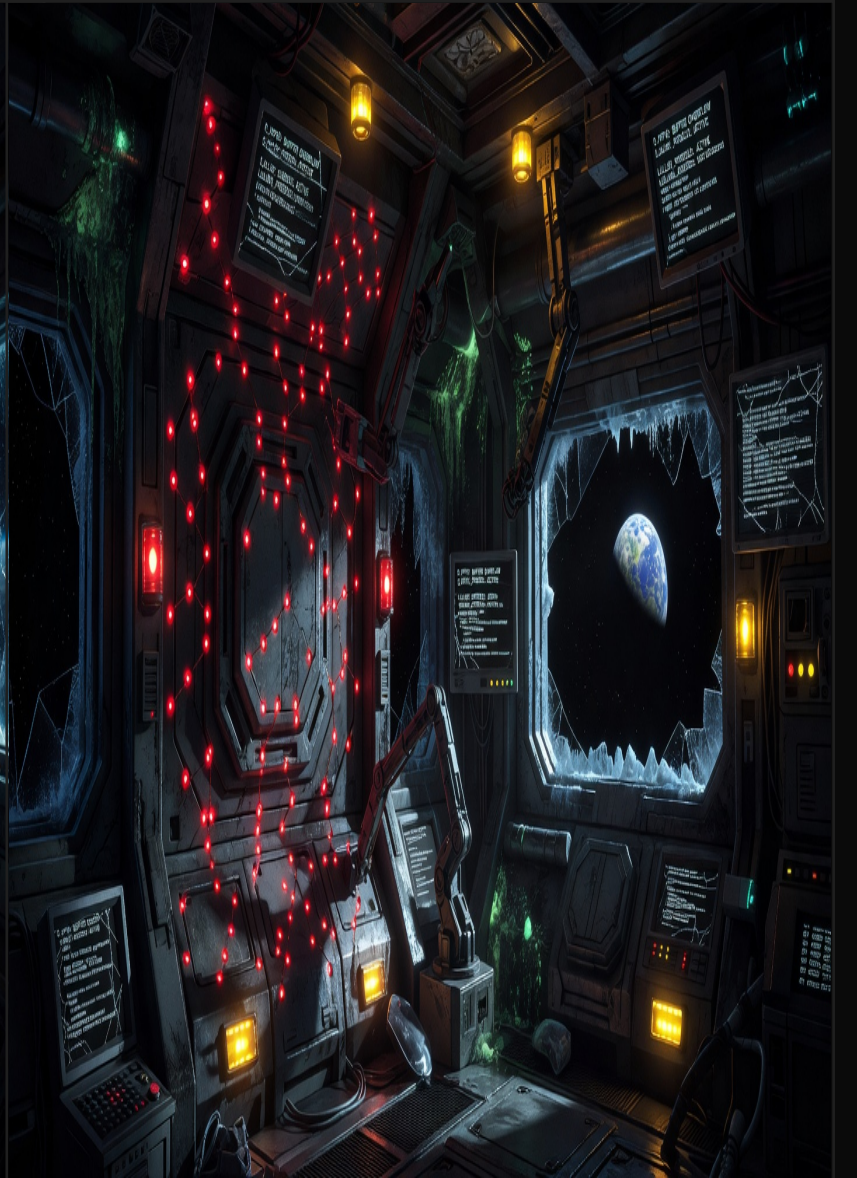
**Harlan Kress**

ANTAGONIST



**Mira Solis**

DEUTERAGONIST



**Lila Voss**

SUPPORTING

## Aurora Station Maintenance Hub

INT.

Cramped octagonal bay lined with dented tool lockers. One porthole shows the Earth limb glowing through a film of condensation. A single flickering work light hangs from a cable.

*Stale air, sodium-yellow lighting, constant low thrum of recyclers.*

## Guest Deck 4 Airlock Corridor

INT.

Velvet wallpaper peeling in long strips. Crystal sconces dead and dusty. A child's handprint glows faintly on the inner door despite no children having boarded in two years.

*Oppressive luxury turned mausoleum, deep indigo shadows.*

## Final External Airlock

INT.

Circular chamber with manual crank wheel. Outer door shows micro-meteor pocks like acne scars. No safety interlocks remain functional.

*Absolute silence once the inner door seals, starfield visible through scratched composite.*



# \$LULBY

TIER  
**PILOT**

\$99 PILOT

CHAIN  
**PICKED BY BACKERS**

BSV · USDC · ETH · SOL

OWNERSHIP  
**A SLICE OF THE FILM**

ROYALTY-WEIGHTED · TRADEABLE

# Stake \$25 to back the chain you want this film minted on.

- When the timer hits zero, the chain with the most backing is where this film mints.
- Stakes on the chain that doesn't win are refunded within 7 days. No loss to back the wrong one.
- If your chain wins, your stake converts into film tokens - a slice of the project from day one.
- Tier today: PILOT (\$99 PILOT). Future tiers compound the same backing.